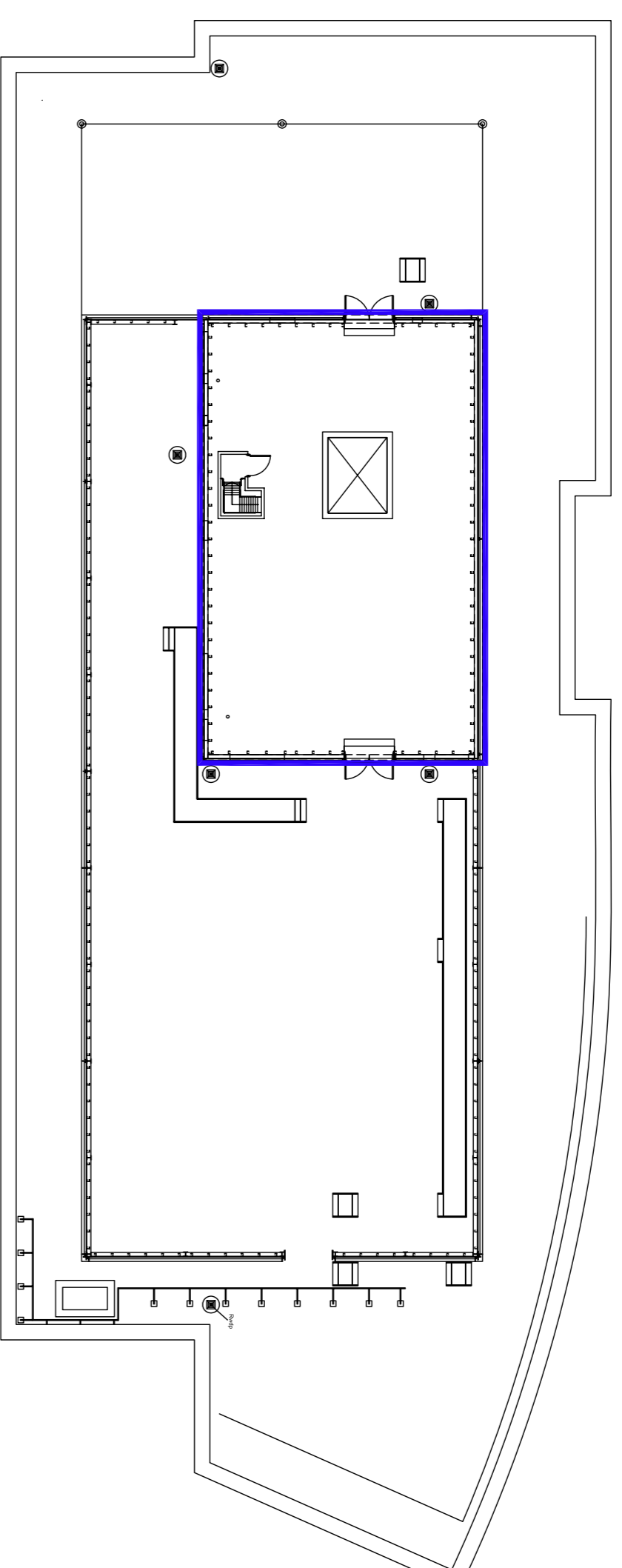
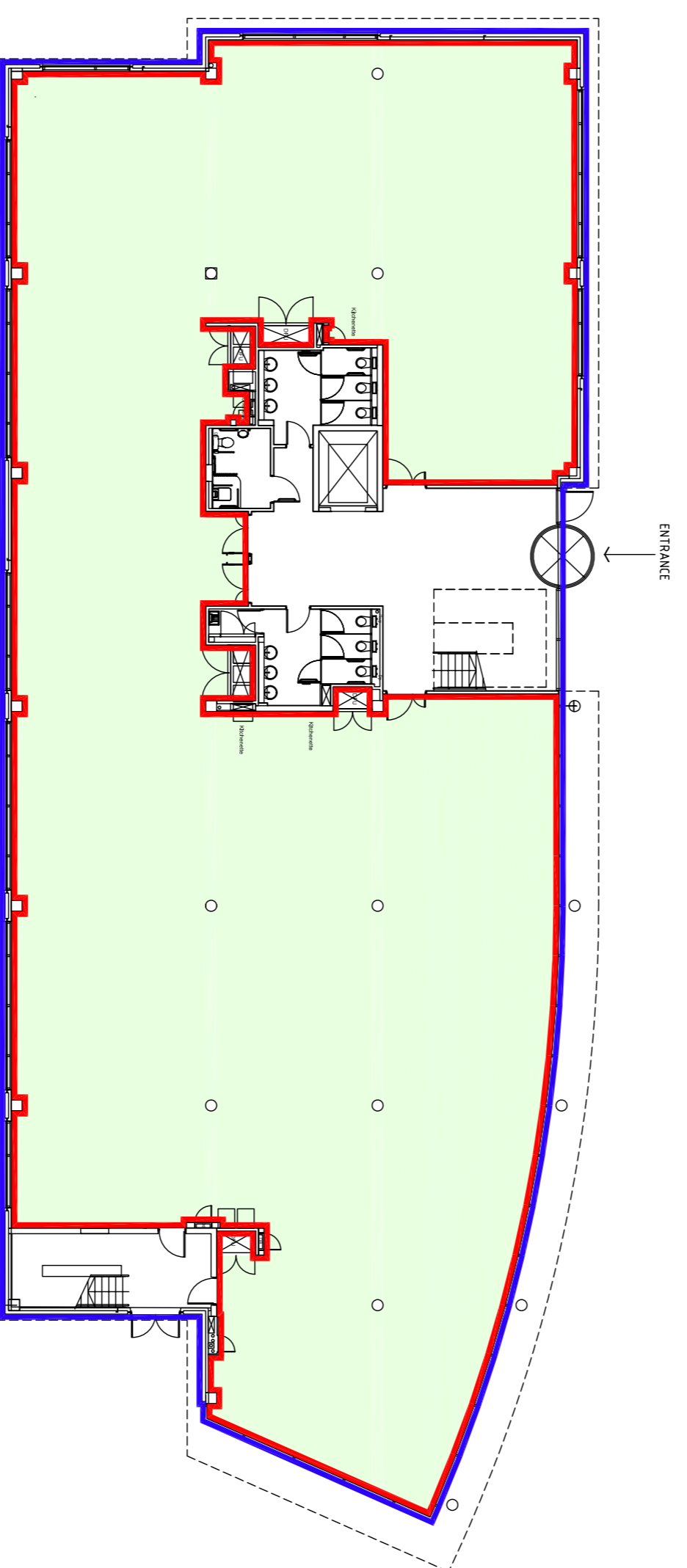


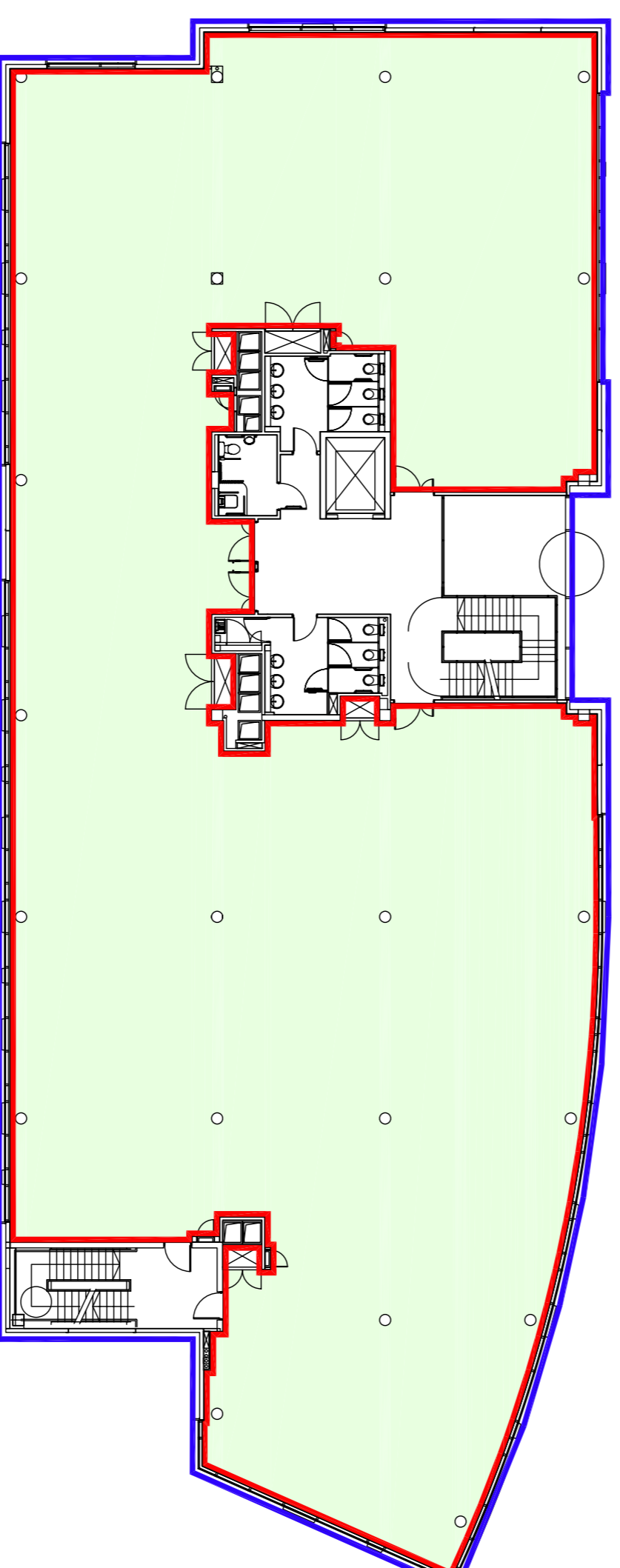
**SECOND FLOOR
VACANT**



**THIRD FLOOR
PLANT ROOM**

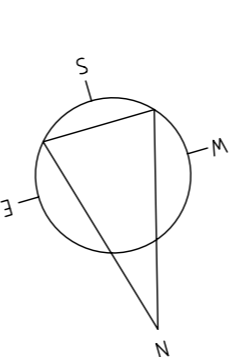
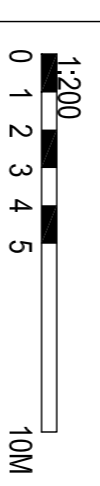


**GROUND FLOOR
SUNGARD SYSTEMS LTD**



**FIRST FLOOR
SUNGARD SYSTEMS LTD**

GROUND FLOOR AREAS	
NET INTERNAL AREA :-	798,50m ² /8,595 Sq Ft
GROSS INTERNAL AREA :-	951,18m ² /10,238 Sq Ft
FIRST FLOOR AREAS	
NET INTERNAL AREA :-	859,33m ² /9,250 Sq Ft
GROSS INTERNAL AREA :-	1003,88m ² /10,806 Sq Ft
SECOND FLOOR AREAS	
NET INTERNAL AREA :-	868,56m ² /9,349 Sq Ft
GROSS INTERNAL AREA :-	1019,42m ² /10,973 Sq Ft
TOTAL FLOOR AREAS	
GROSS EXTERNAL AREA :-	3295,63m ² /35,474 Sq Ft
GROSS INTERNAL AREA :-	3121,18m ² /33,596 Sq Ft
NET INTERNAL AREA :-	2526,39m ² /27,194 Sq Ft
KEY	
	GROSS EXTERNAL AREA
	IDENTIFICATION OF TENANTS DEMISE
	LETTABLE AREA



- NOTES
1. DO NOT SCALE
 2. THESE PLANS ARE FOR INFORMATION ONLY. ALL DIMENSIONS AND SPECIFICATIONS ARE TO BE TAKEN FROM THE ARCHITECTURAL DRAWINGS AND SPECIFICATIONS.
 3. COPYRIGHT DRAWINGS NOT TO BE REPRODUCED OR USED WITHOUT PRIOR WRITTEN CONSENT.

INFORMATION

A	27/03/11	PLAN INCLUDING DEMISE UPDATES	TH	GT
REF	DATE	REVISION	DRAWN	CHECKED

DRAWING
100 MILTON PARK
GROUND, FIRST & SECOND
FLOOR PLANS

PROJECT
MEPC AREA SURVEYS
CLIENT
MEPC

SCALE	DATE	DRAWN BY	CHECKED BY
1:200@A1	MAY 11	TH	GT
DWG NO	REV	FILE REFERENCE	XREF FILE REFERENCE:
110727-100	A		

RIDGE
THE CONYVARS
BLENNEM PARK
OXFORD ROAD
WOODSTOCK OX20 1QR
www.ridge.co.uk
TEL: 01993 815000
FAX: 01993 815001

