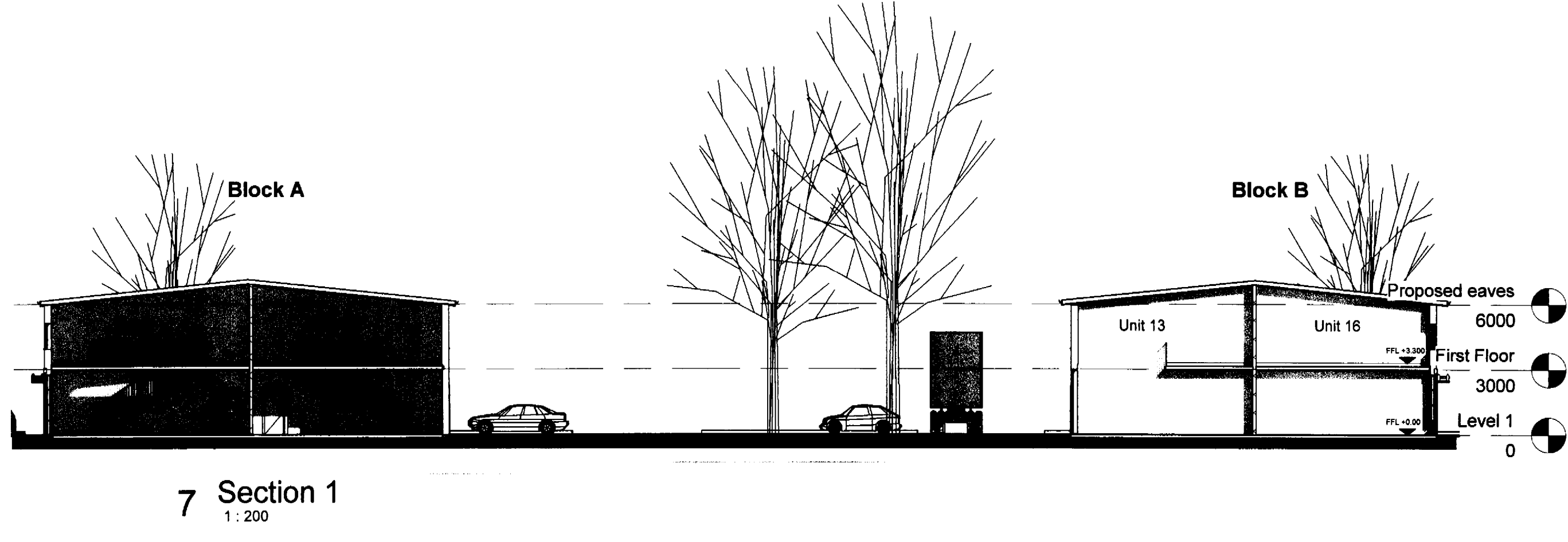
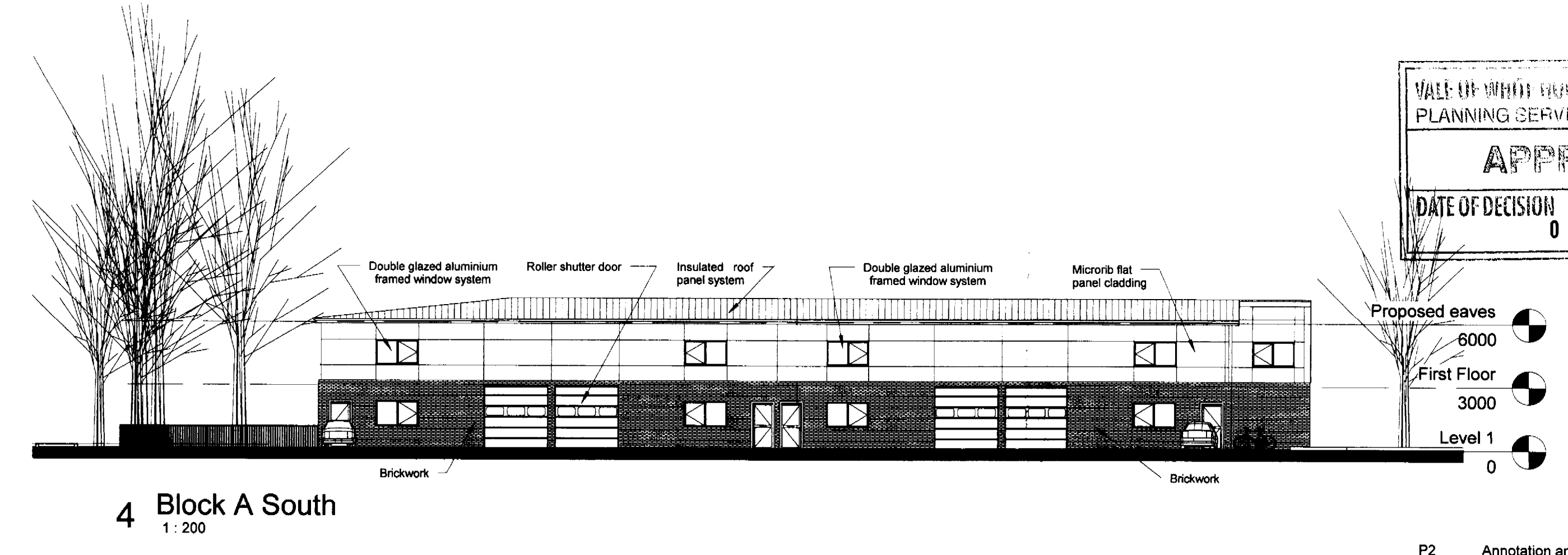
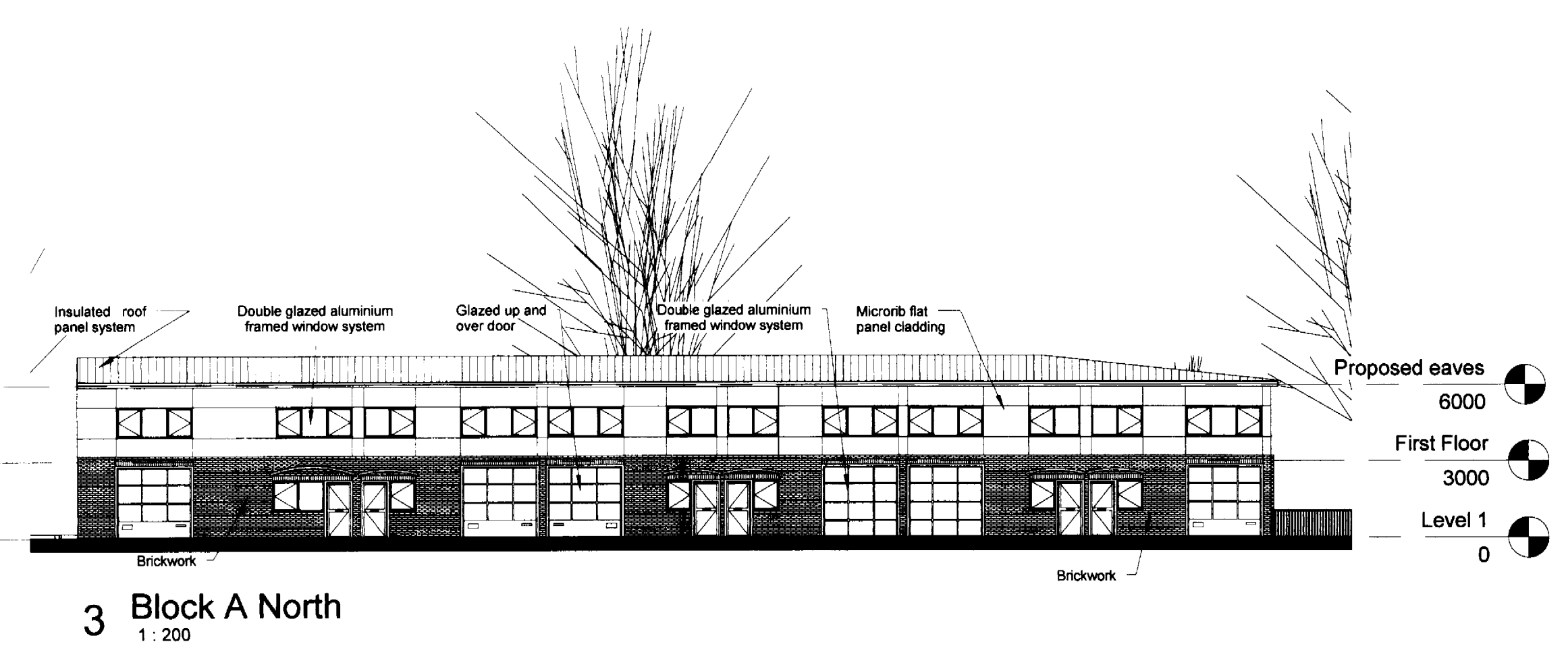
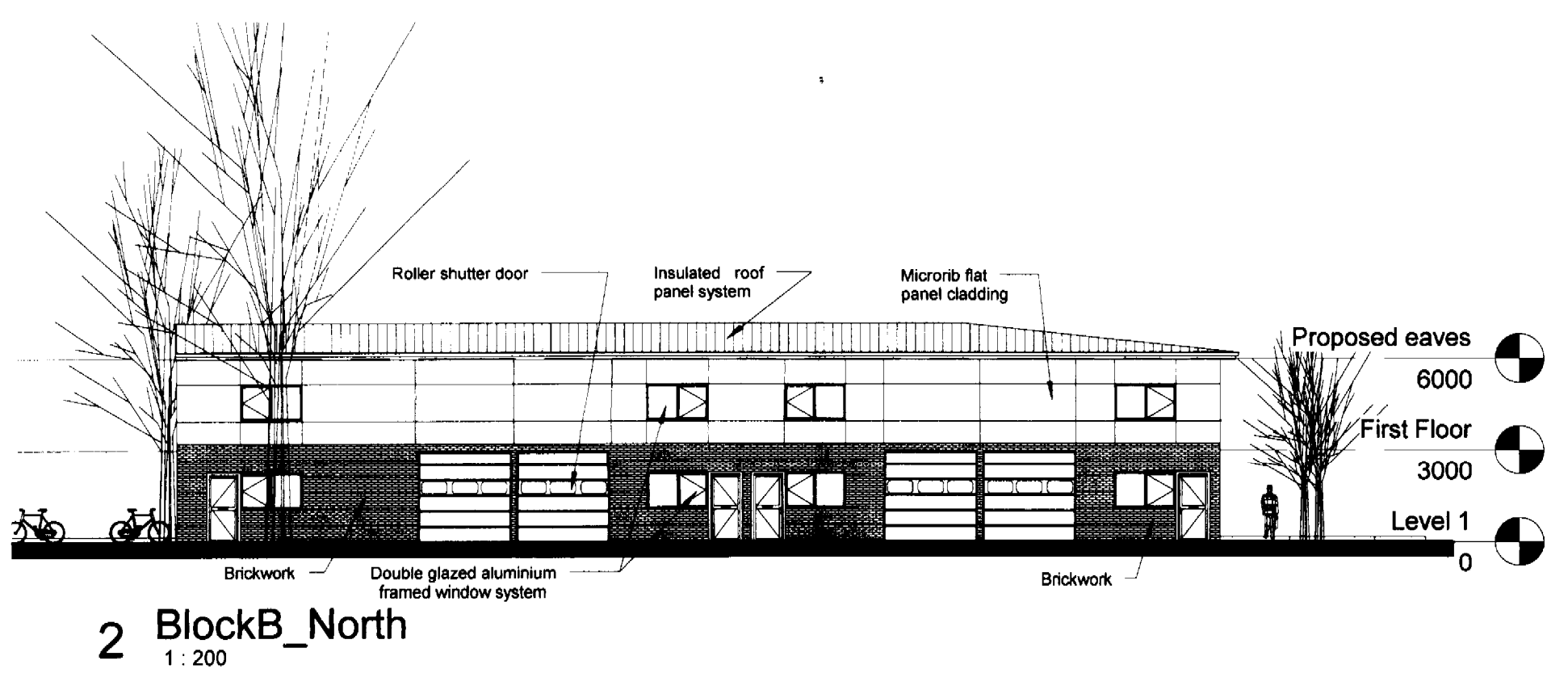
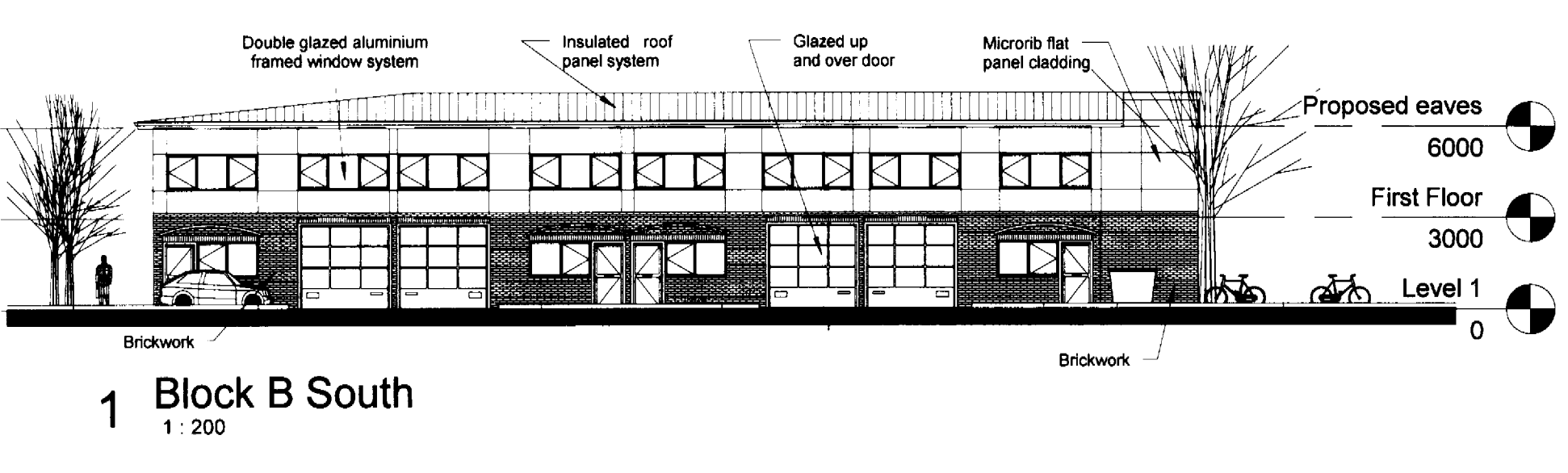
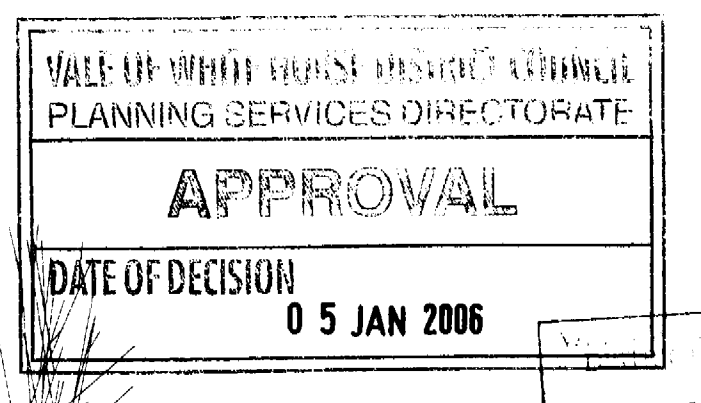


Notes
Report any discrepancies to the author.
Do not scale from this drawing.
Copyright Househam Henderson Architects.



This drawing is protected by the Copyright, Designs and Patent Act 1988 (Section 47). You may only download and/or print a copy for consultation purposes, to complete a current application with previous schemes, and to check whether a development is being carried out or has been completed in accordance with the approved drawings. If you require a copy of the drawings or of material for any other purpose you will need to obtain the prior permission of the copyright owner.



PLANNING

P2	Annotation amended	AO JM	14.10.05
P1	Canopy added for the office units entrances	AO JM	07.10.05
P0	First issue	AO JM	22.09.05
Rev	Description	By	Check Date

househamhenderson architects
3 Charlotte Mews Staple Gardens, Winchester Hampshire SO23 8SR
T 01962 83500 F 01962 83501 winchester@hharchitects.co.uk

Client
Glenmore Investments

Project
Wantage Business Park

Drawing
Elevations and section

Scale	Date	Author	Checked
1:200	22.09.05	AE	JM
Project No	Drawing No / Rev		
2443	L003/ P2		

AMENDED PLAN