

This drawing is the copyright of The Paul Robinson Partnership and can only be reproduced with their written permission.

This drawing is not to be scaled.

Any discrepancies on site are to be notified to The Paul Robinson Partnership.

This drawing has been prepared for Planning and Building Regulation purposes only and does not constitute or form part of any contract unless specifically annexed thereto in writing by The Paul Robinson Partnership.

On this drawing the term 'client' means the client named in the title block.

NOTES

REV 'E' 7/8/98
 1. EXISTING ENTRANCE CLOSED OFF.
 2. NEW ENTRANCE OFF HAWKESWORTH RD ADDED FOR COMMERCIAL VEHICLE ACCESS.
 3. EXTG CLOSE BOARDED FENCE AT NEW ENTRANCE TO NEW REAR PARKING AREA AMENDED TO DWARF WALL AND PALISADE FENCE DETAIL.
 4. ADJACENT INDUSTRIAL UNITS ADDED. (EXISTING)

REV 'D' 30/7/98
 1. POTENTIAL LOCATION OF PERMANENT BUILDING TO REPLACE TEMPORARY 'PORTAKABIN' ADDED.

REV 'C' 26/6/98
 1. DWARF WALL CONSTRUCTION LINE AMENDED TO LINE WITH VISION SPLAY.
 2. PORTAKABIN ADDED TO REAR YARD.

REV 'B' 8/5/98
 1. NEW CONC. RAMP FROM WORKSHOP PROJECTION AMENDED

REV 'A' 27/4/98
 SCHEDULE OF WORKS NOTES ADDED.

REVISIONS

PAUL ROBINSON PARTNERSHIP

ARCHITECTS, SURVEYORS, DESIGN AND PLANNING CONSULTANTS
 THE OLD VICARAGE, CHURCH PLAIN, GREAT YARMOUTH, NORFOLK NR30 1NE
 (01493) 842219 FAX (01493) 330017

CLIENT:
VOLVO TRUCK & BUS SOUTH.

S.O.D.C
 11 AUG 1998
 PLANNING

LOCATION:
SOUTHMEAD INDUSTRIAL ESTATE, DIDCOT, OXFORDSHIRE.

DRAWING TITLE:
ALTERATIONS TO EXISTING BUILDING. PROPOSED SITE LAYOUT

SCALE: 1:200	DRAWING NO: 5085-02E
DATE: FEB 1998	DRAWN BY: I.R.M.



SCHEDULE OF WORK NOTES:-

- 4.1 TAKE UP APPROXIMATELY 25M RUN OF KERB EDGING
- 4.2 REMOVE APPROXIMATELY 50sq METRES OF 800X800MM PAVING SLABS (RETAINING SUFFICIENT FOR RE-USE ELSEWHERE).
- 4.3 REMOVE EXTG CONCRETE RAMP TO PARTS STORE ENTRANCE.
- 4.4 FORM NEW CONCRETE RAMP USING C30P CONCRETE FROM LEVEL OF EXTG FLOOR AND WORKSHOP AREA. PROJECTION OF NEW CONC RAMP TO BE AGREED ON SITE WITH RESPECT TO LEVELS AND LORRY ACCESS. SUB-BASE APPROXIMATELY 150MM THICK CRUSHED CONCRETE AND 150MM THICK CONCRETE RAMP WITH A142 MESH REINFORCEMENT. CONCRETE TO BE FINISHED WITH WOODCOAT SMOOTH FINISH BRUSH MARKED AND WITH 100MM WIDE TROWELLED EDGES. SEE DETAIL ON DRG 5085-23
- 4.5 TAKE UP APPROXIMATELY 25sq BROKEN PAVING SLABS AROUND BUILDING AND RELAY FROM RECLAIMED PAVING SLABS AS SPEC.
- 4.6 TAKE UP AND RELAY ON MORTAR BED INCLUDING REPLACING BROKEN SLABS ITEMIZED ABOVE APPROXIMATELY 100 SLABS FORMING ACCESS PATH FROM CAR PARK AREA TO MAIN ENTRANCE OF BUILDING WHERE THESE HAVE SETTLED OVER PREVIOUS DRAINAGE PIPES.
- 4.7 TAKE UP APPROX. 8sq PAVING SLABS IMMEDIATELY OUTSIDE STAFF ENTRANCE/FIRE ESCAPE AND LAY LEVEL WITH APPROX. 10MM CHECK AT EXTERNAL THRESHOLD ON MORTAR BED AS ABOVE.
- 4.8 RE-HANG SIDE GATE TO WOODEN FENCE. PROVIDE AND FIX HASP AND FIVE LEVER PADLOCK WITH PROTECTED LOOP.
- 4.9 TAKE UP EXTG CONC. PATH AND TIMBER EDGINGS LINKING TRIPLE DOOR ON WEST ELEVATION WITH 'PORTAKABIN'. RETAIN EXTG 8sq 900X800MM PAVING SLABS AT THE THRESHOLD.
- 4.10 GENERALLY CLEAR RUBBISH FROM SURROUNDING AREAS CONSISTING OF VARIOUS PALLETS, PLASTIC CRATES, GENERAL SCRUB, LOOSE DUCTING, METAL FRAMES, ANGLE IRONS, PVC WASTEPIPES, CHIPBOARD PARTITIONING MATERIAL, PORTAKABIN, CONCRETE BLOCKS, SHEET METAL, GAS BOTTLES, METAL CONDUITING, POLYTHENE, BRICK LUMPS, METALWORK, TIMBER SLATS, TIMBER BOARDS, OLD MACHINERY, FANS/DUCTS/ELECTRIC MOTORS/RUBBISH BINS, GLASS ETC.
- 4.11 CLEAR ALL EXTERNAL RAINWATER GULLIES IN PAVED AREAS AND LEAVE FREE FLOWING.
- 4.15 EXCAVATE DOWN TO LINE OF SURFACE WATER CONNECTION FROM SWMH 2 TO CONNECTION WITH SEWER IN MAIN ROAD. CUT INTO DRAIN LENGTH AND INSTALL NEW FLOW LINE PETROL INTERCEPTOR UNIT AS DETAIL. MAKE GOOD TO SURROUNDING AREAS.
- 4.16 REMOVE APPROXIMATELY 10M LENGTH OF ROAD KERBS AT NEW VEHICLE CROSSOVER POINT. LAY DROPPER KERBS AT EXTREMITIES AND CROSSOVER KERBS BETWEEN AS DETAIL. TAKE UP EXTG ASPHALT PATH TO EXTG BACK EDGE OF FOOTPATH REDUCE LEVELS AND FORM NEW CROSSOVER INCLUDING ASPHALT SURFACE IN ACCORDANCE WITH SOUTH OXFORDSHIRE COUNTY COUNCIL HIGHWAYS DEPARTMENT CROSSOVER SPECIFICATION FOR LIGHT VEHICLES.
- 4.17 CAREFULLY TAKE UP AND REPLANT EXTG TREES IN LINE OF AND WITHIN 1M OF PROPOSED NEW DRIVE ACCESS. TAKE CARE NOT TO DAMAGE ROOT BALL AND REPLANT IN LOCATIONS TO BE DIRECTED ON SITE. STAKE TREES WITH GOOD STOUT STAKES AND FLEXIBLE FIGURE '8' CONNECTORS. MULCH AROUND ROOT BALL AND BASE OF TREE AND WATER IN THOROUGHLY.
- 4.18 EXCAVATE TO REDUCED LEVELS AND FORM NEW ACCESS DRIVEWAY 4M WIDE WITH 150MM GRADE 2 D.O.T. SUB-BASE MATERIAL AND 75MM SINGLE COAT 10MM AGGREGATE TARMAC WITH WHITE GRANITE CHIPPINGS. EDGE OF DRIVEWAY TO BE FORMED WITH 150X50 MM HYDRAULICALLY PRESSED PRE-CAST SQUARE EDGED KERBS SET IN CONCRETE HAUNCHING.
- 4.19 REMOVE 4M LENGTH OF EXTG FENCE COINCIDING WITH NEW DRIVE. TRIM PANELS INTO RE-USED GALVANIZED 'H' SECTION POSTS SET IN 450MM CUBED CONCRETE BASE. FORM NEW PAIR OF DOUBLE GATES LEDGED AND BRACED USING VERTICAL SLATS WITH LONG HEAVY DUTY BOLTED STRAP HINGES AND PIVOTS WITH PERMANENTLY WELDED RETENTION PIN TO HINGES. PROVIDE AND FIX GATE BOLT TO BOTTOM OF EACH GATE AND HASP WITH FIVE LEVER PADLOCK WITH PROTECTED HOOD TO MATCH KEYS OF PERSONNEL GATE AS PREVIOUSLY SPECIFIED.
- 4.20 EXCAVATE OVER AREA OF NEW PARKING APPROX. 1060SQ METRES TO A DEPTH OF APPROX. 150MM. FORM SUB-BASE D.O.T. GRADE 2 MATERIAL APPROX. 150MM THICK LAY STRAIGHT CROSS FALL FROM BUILDING TOWARDS DITCH ON BOUNDARY LINE OF APPROX 300MM. LAY APPROX. 75MM THICKNESS CRUSHED CONC. SURFACE TOPPING WITH SUFFICIENT FINES TO INFILL VOID SPACES AS SURFACE PARKING FINISH.
 N.B. TAKE CARE NOT TO DISTURB EXISTING OVERGROWN HEDGELINE TO WESTERN BOUNDARY WHICH IS A PROTECTED HEDGE AND ALSO TO PRESERVE SAPLING GROWTH OF HEDGE ALONG NORTH BOUNDARY TO ADJACENT 'TESCO' PROPERTY.
- 4.21 ALONG FRONT BOUNDARY OF SITE TO HAWKESWORTH FORM NEW DWARF WALL AND PALISADE BOUNDARY FENCE AS DETAIL.
- 4.22 TO EAST BOUNDARY BEHIND EXTG LANDSCAPING FORM NEW PALISADE FENCING 2.4M HIGH AS DETAIL. TO ENTRANCE FORM NEW PALISADE GATES AS DETAIL.
- 4.23 AT 3M FROM EXTG KERB LINE ON EAST BOUNDARY PARKING EXCAVATE THROUGH 'TARMAC' AND LAY STANDARD KERBS ON CONCRETE BED AND HAUNCH WITH CONCRETE TO FINISH FLUSH WITH TARMAC ON EITHER SIDE AS WHEELSTOP BARRIER LINE. AT APPROX. 3M INTERVALS AND AT EACH END LEAVE APPROX 150MM GAP TO ALLOW FREE DRAINING TO EXISTING GULLIES. SEE DETAIL ON DRG 5085-23.
- 4.24 AT REAR OF WEST BOUNDARY FORM NEW PALISADE FENCE 2.4M HIGH AS DETAIL ON DRG 5085-23
- 4.25 INSTALL NEW 'OSMA' PLASTIC INSPECTION CHAMBER FOR RODDING PURPOSES TO PROVIDE CLEANING TO FLO-LINE PETROL INTERCEPTOR TO COMPLY WITH LOCAL ENVIRONMENT AGENCY REQUIREMENTS. ON LINE OF DRAIN RUN FROM NEW PETROL INTERCEPTOR TO EXTG LOCAL AUTHORITY SEWER IN ROAD.
- 4.26 EXISTING LOW LEVEL LANDSCAPING TO BE RETAINED.
- 4.27 FORM NEW ACCESS OFF HAWKESWORTH INTO LORRY TURNING AREA IN ACCORDANCE WITH SOUTH OXFORDSHIRE DISTRICT COUNCIL HIGHWAYS DEPARTMENT CROSSOVER SPECIFICATION FOR COMMERCIAL VEHICLES

98/612

This drawing is the copyright of The Paul Robinson Partnership and can only be reproduced with their written permission.

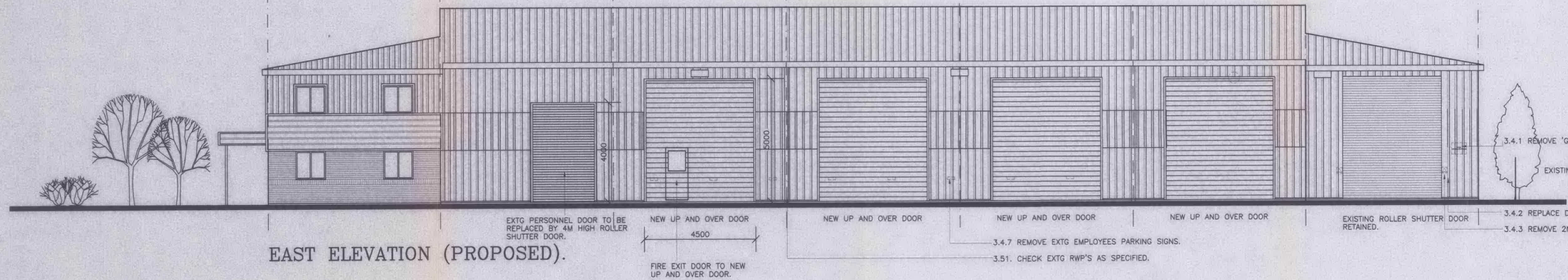
This drawing is not to be scaled

Any discrepancies on site are to be notified to The Paul Robinson Partnership.

This drawing has been prepared for Planning and Building Regulation purposes only and does not constitute or form part of any contract unless specifically annexed thereto in writing by The Paul Robinson Partnership.

On this drawing the term 'client' means the client named in the title block

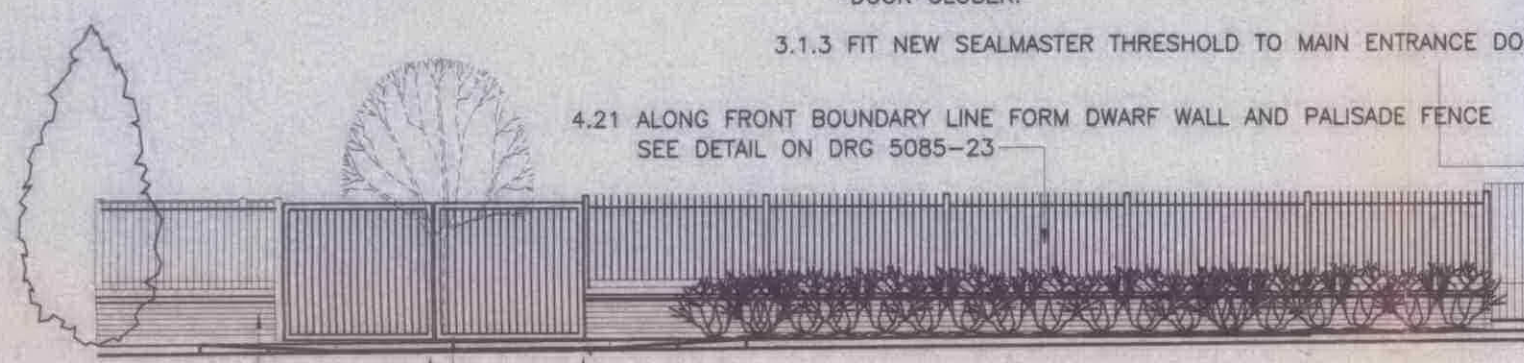
NOTES



EAST ELEVATION (PROPOSED).

- 3.1.1 REMOVE EXTG FLUSH EXTERNAL DOOR AND REPLACE WITH NEW FLUSH SOLID CORE EXTERNAL DOOR WITH WEATHER BOARD.
- 3.1.2 SUPPLY AND FIT NEW DEADLOCK WITH SNIB RELEASE AND DOOR CLOSER.
- 3.1.3 FIT NEW SEALMASTER THRESHOLD TO MAIN ENTRANCE DOOR.

4.21 ALONG FRONT BOUNDARY LINE FORM DWARF WALL AND PALISADE FENCE SEE DETAIL ON DRG 5085-23

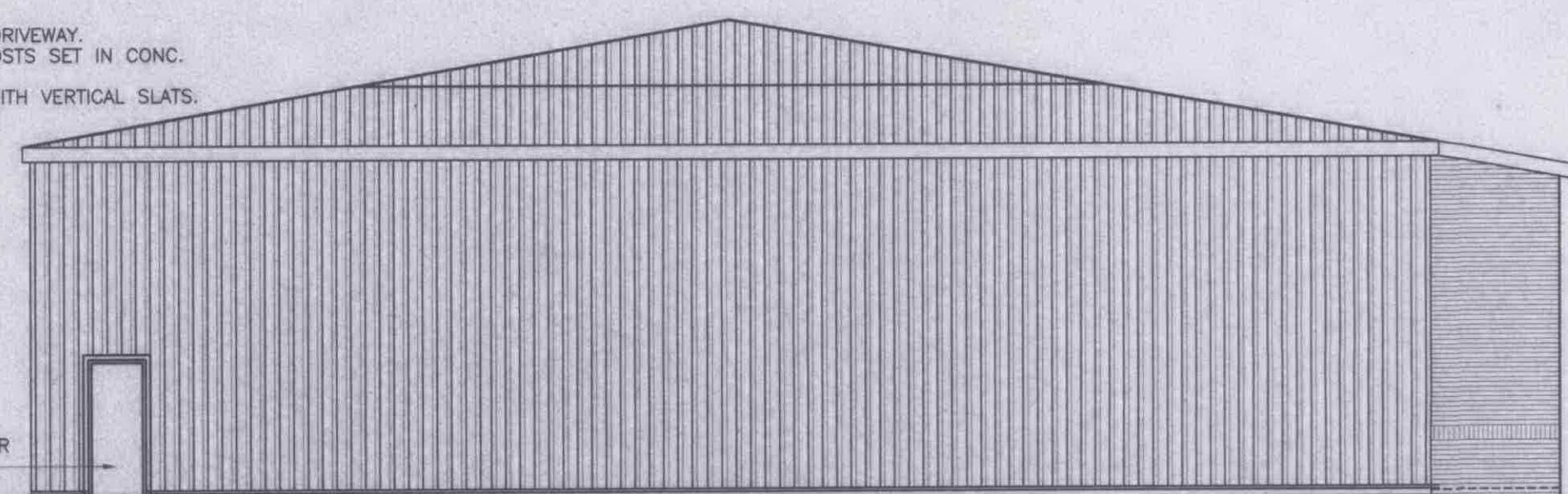


SOUTH ELEVATION (PROPOSED).

- 4.16 FORM NEW VEHICLE CROSSOVER AS DETAIL TO NEW CAR PARK AREA.
- 4.17 REPLANT EXTG TREES IN LINE OF AND WITHIN 1M OF PROPOSED NEW DRIVE ACCESS.
- 4.18 FORM 4M WIDE ACCESS DRIVEWAY.
- 4.19 REMOVE 4M LENGTH OF FENCE COINCIDING WITH NEW DRIVEWAY. TRIM PANELS INTO RE-USED GALVANIZED H-SECTION POSTS SET IN CONC. BASE 450MM CUBED. FORM NEW PAIR DOUBLE GATES LEDGED AND BRACED WITH VERTICAL SLATS. SEE DETAIL ON DRG 5085-23

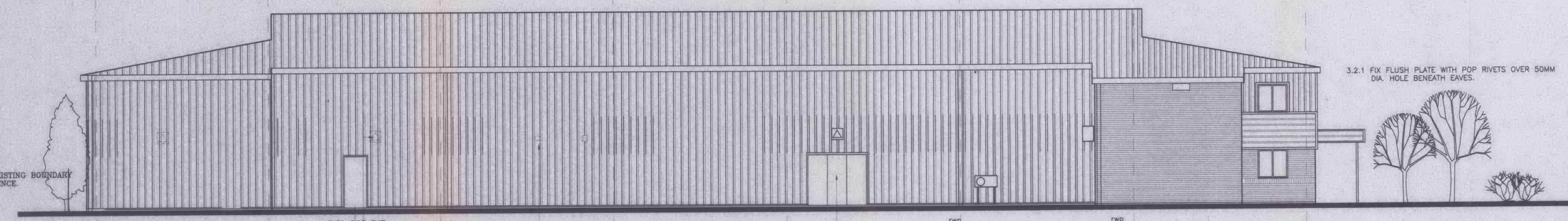
4.21 ALONG FRONT BOUNDARY LINE FORM DWARF WALL AND PALISADE FENCE SEE DETAIL ON DRG 5085-23

PALISADE STEEL SECURITY GATES : TO MATCH SECURITY FENCING TO B.S. 1722 : PART 12 TYPE GP24: GALVANIZED STEEL TO B.S. 729 BRACKET AND STABILISING WHEEL AT MEETING POST SECURITY HINGES, DROP BOLTS AND SLAM PLATES. EACH HANGING POST SHALL COMPRISE 203X203X86 KG/M 'UC' 2400MM ABOVE GROUND LEVEL, SET 600MM INTO GROUND WITH 6MM BASE PLATE. LOCKING SHALL COMPRISE HORIZONTAL LOCKING PLATE AND BAR ASSEMBLY COMPLETE WITH FIVE LEVER SECURITY PADLOCK. PAIR GATES 7125MM WIDE X 2400MM HIGH OVERALL.



NORTH ELEVATION (PROPOSED)

3.3.3 FORM NEW OPENING THROUGH EXTG CLADDING AND BLOCKWORK AND INSTALL NEW FLUSH SOLID CORE DOOR WITH PUSH BAR PANEL.



WEST ELEVATION (PROPOSED).

- 3.2.3 REMOVE EXTG CLOSED CIRCUIT TV WARNING SIGNS SHOWN THUS.
- 3.2.4 PROVIDE AND FIT BLANK ESCUTCHEON OVER REDUNDANT HANDLE HOLE TO TRIPLE DOOR. REMOVE EXTERNAL BRUSH SEALS AT BOTTOM OF DOORS AND REPLACE WITH 'SEALMASTER' THRESHOLD. REPLACE EXTG BARREL BOLTS WITH SECURE BOLTS.
- 3.2.6 REMOVE METAL FLUE PIPE 200MM DIA. AND MAKE GOOD TO HOLE AS SPECIFIED.
- 3.2.7 FIX SEALMASTER WEATHER BAR TO FIRE EXIT.

- REV 'E' 7/8/98
1. EXISTING ENTRANCE CLOSED OFF.
 2. NEW ENTRANCE OFF HAWKESWORTH RD ADDED FOR COMMERCIAL VEHICLE ACCESS.
 3. EXTG CLOSE BOARDED FENCE AT NEW ENTRANCE TO REAR PARKING AREA AMENDED TO DWARF WALL AND PALISADE FENCE DETAIL.
 4. ADJACENT INDUSTRIAL UNITS ADDED.
- 4.24 FORM NEW PALISADE FENCE 2.4M HIGH APPROXIMATELY 10M LENGTH.
- REV 'D' 6/5/98
1. PERSONNEL DOOR ADDED TO NEW UP AND OVER DOOR.
- REV 'C' 27/4/98
- SCHEDULE OF WORKS NOTES ADDED.
- REV 'B' 16/4/98
1. 2 No. WINDOWS OMITTED FROM WEST ELEVATION.
 2. VISION PANELS OMITTED FROM ROLLERSHUTTER DOORS.
 3. 2 ADDITIONAL ROLLERSHUTTER DOORS SHOWN.
 4. 2No. FLOOD LIGHTS SHOWN.
- REV 'A' 3/4/98
1. WEST ELEVATION ADDED TO SHOW NEW WINDOWS ADDED.

REVISIONS

PAUL ROBINSON PARTNERSHIP

ARCHITECTS, SURVEYORS, DESIGN AND PLANNING CONSULTANTS
THE OLD VICARAGE, CHURCH PLAIN, GREAT YARMOUTH, NORFOLK NR30 1NE
TELEPHONE: (0493) 842215 FAX: (0493) 330017
ALSO AT NORWICH TELEPHONE: (0603) 628560
AND PETERBOROUGH TELEPHONE: (0733) 67032

CLIENT:
VOLVO TRUCK & BUS SOUTH.

S.O.D.C.
11 AUG 1998
PLANNING

LOCATION:
SOUTHMEAD INDUSTRIAL ESTATE, DIDCOT, OXFORDSHIRE.

DRAWING TITLE:
ALTERATIONS TO EXISTING BUILDING. PROPOSED ELEVATIONS

SCALE: 1:100	DRAWING NO: 5085-03E
DATE: FEB 1998	DRAWN BY: I.R.M.

This drawing is the copyright of The Paul Robinson Partnership and can only be reproduced with their written permission.

This drawing is not to be scaled

Any discrepancies on site are to be notified to The Paul Robinson Partnership.

This drawing has been prepared for Planning and Building Regulation purposes only and does not constitute or form part of any contract unless specifically annexed thereto in writing by The Paul Robinson Partnership.

On this drawing the term 'client' means the client named in the title block

N.B.
PORTAKABIN
DELETED

NOTES

- REV 'D' 26/6/98 NEW PORTAKABIN POSITION ADDED TO REAR YARD.
- REV 'C' 4/6/98 DETAILS FOR MEZZANINE FLOOR FOR PARTS STORAGE ADDED
- Rev.B 24.4.98 Dims to roller shutter door openings revised to 4500mm. Cross bracing to remain to fire exit bay on west elevation. Markmans w.c. layout amended. Escape door shown in S.E. roller shutter door.
- Rev.A 14.4.98 General revisions

REVISIONS

PAUL ROBINSON PARTNERSHIP

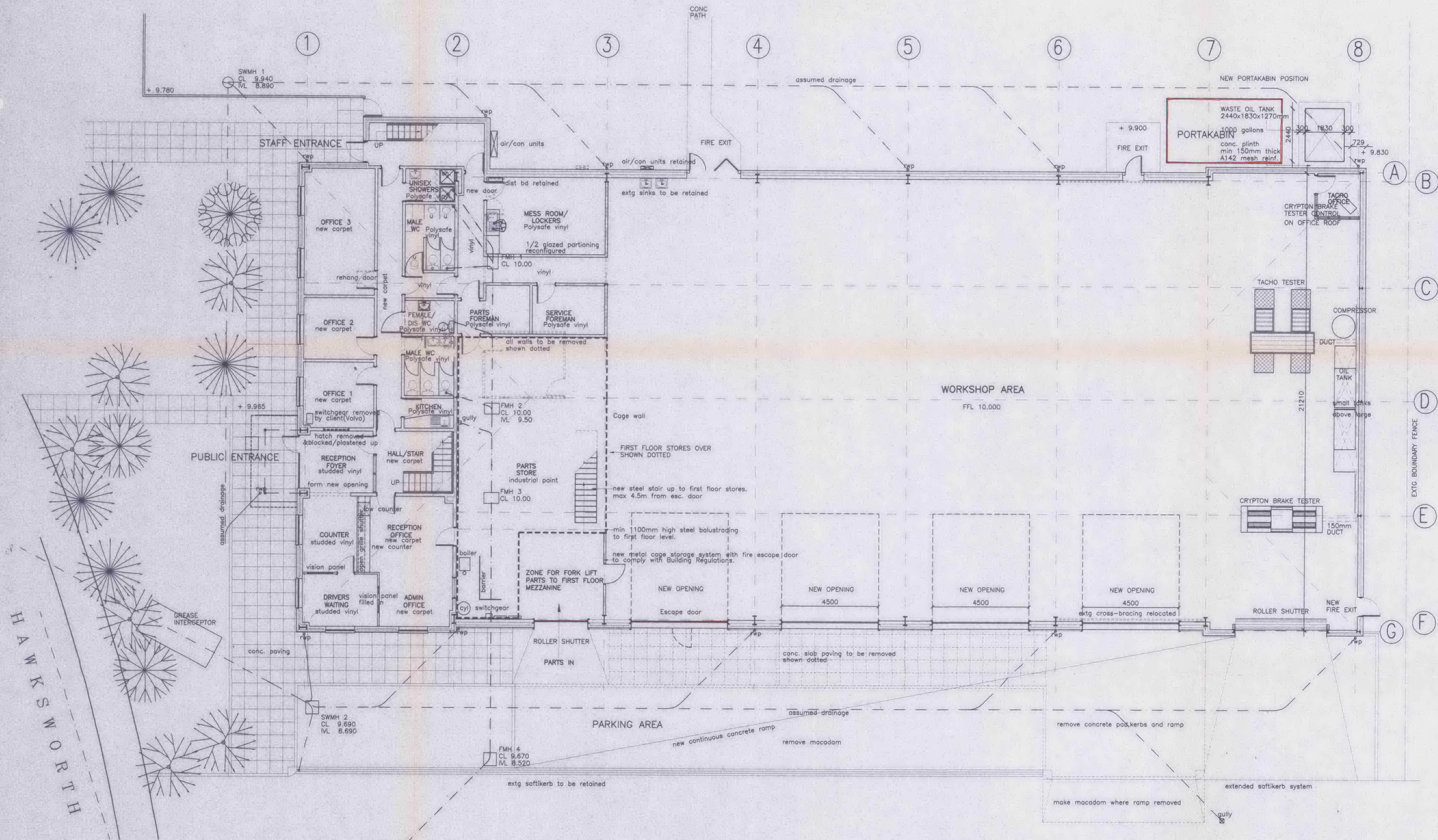
S.O.D.C.
ARCHITECTS, SURVEYORS, DESIGN AND PLANNING CONSULTANTS
THE OLD VICARAGE, CHURCH FARM, GREAT FARMOUTH, NORFOLK NR30 1NE
TELEPHONE: (01493) 542219 FAX: (01493) 330017

CLIENT:
VOLVO TRUCK & BUS SOUTH.

LOCATION:
**SOUTHMEAD INDUSTRIAL ESTATE,
DIDCOT, OXFORDSHIRE.**

DRAWING TITLE:
**ALTERATIONS TO EXISTING BUILDING.
OFFICE PROPOSALS (4)**

SCALE: 1:100	DRAWING NO: 5085-14D
DATE: MAR 1998	DRAWN BY: I.R.M.



HAWKSWORTH