
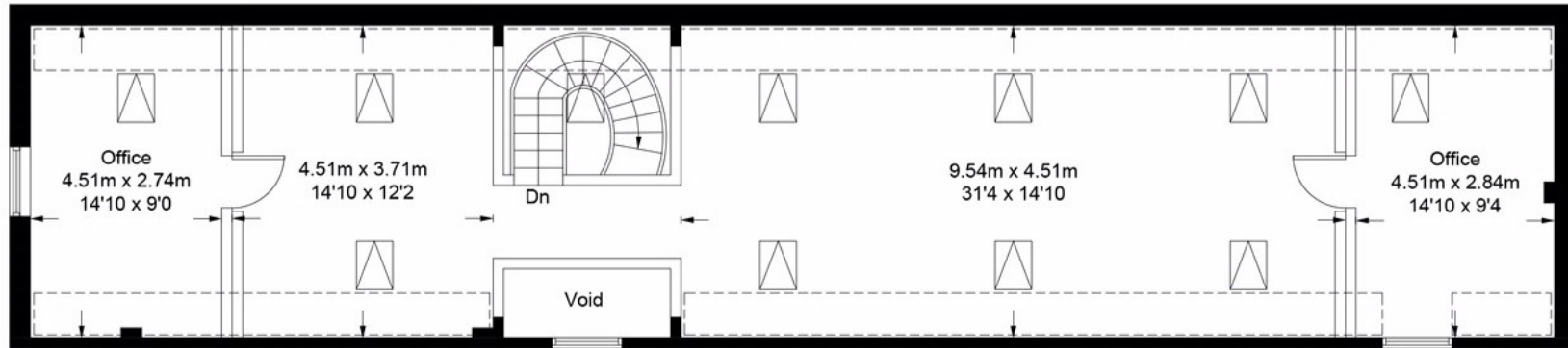


Unit 1 Michael's Court, New Farm House, Southmoor, Abingdon, OX13 5H

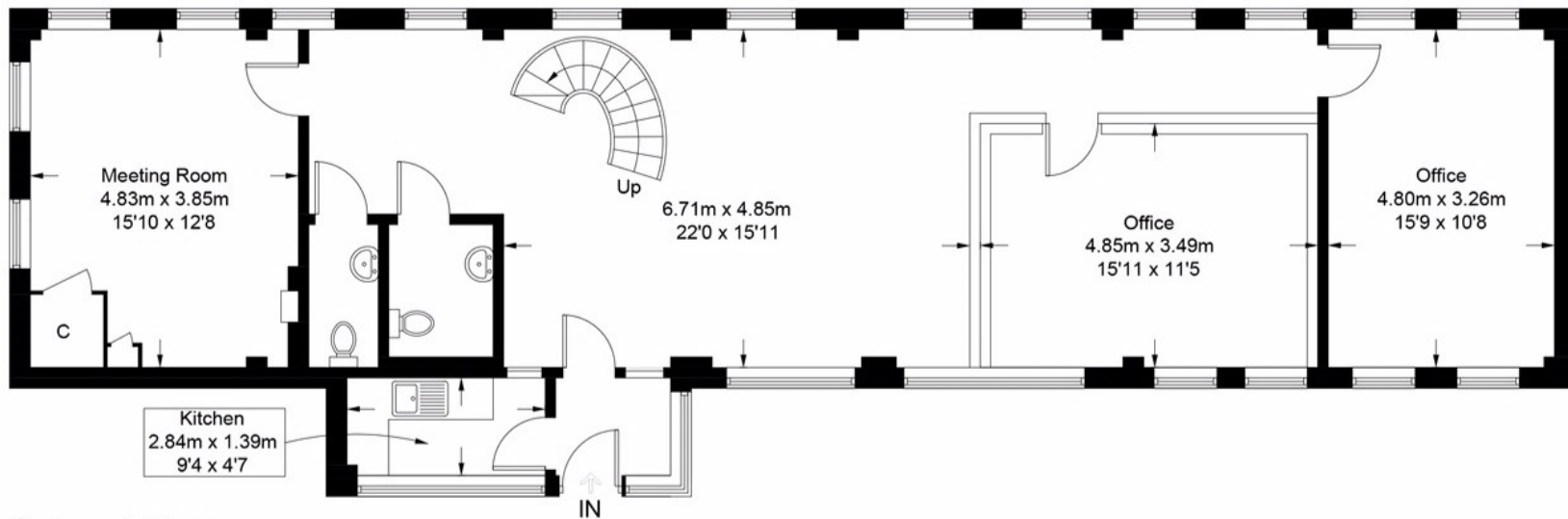


 = Reduced headroom below 1.5m / 5'0



First Floor

95.4 sq m / 1027 sq ft (Excluding Void)



Ground Floor

113.5 sq m / 1222 sq ft

Approximate Gross Internal Area = 208.9 sq m / 2249 sq ft
(Excluding Void)

Illustration for identification purposes only, measurements are approximate, not to scale. (ID810642)